



THE CONCEPT

A True Blue Experience

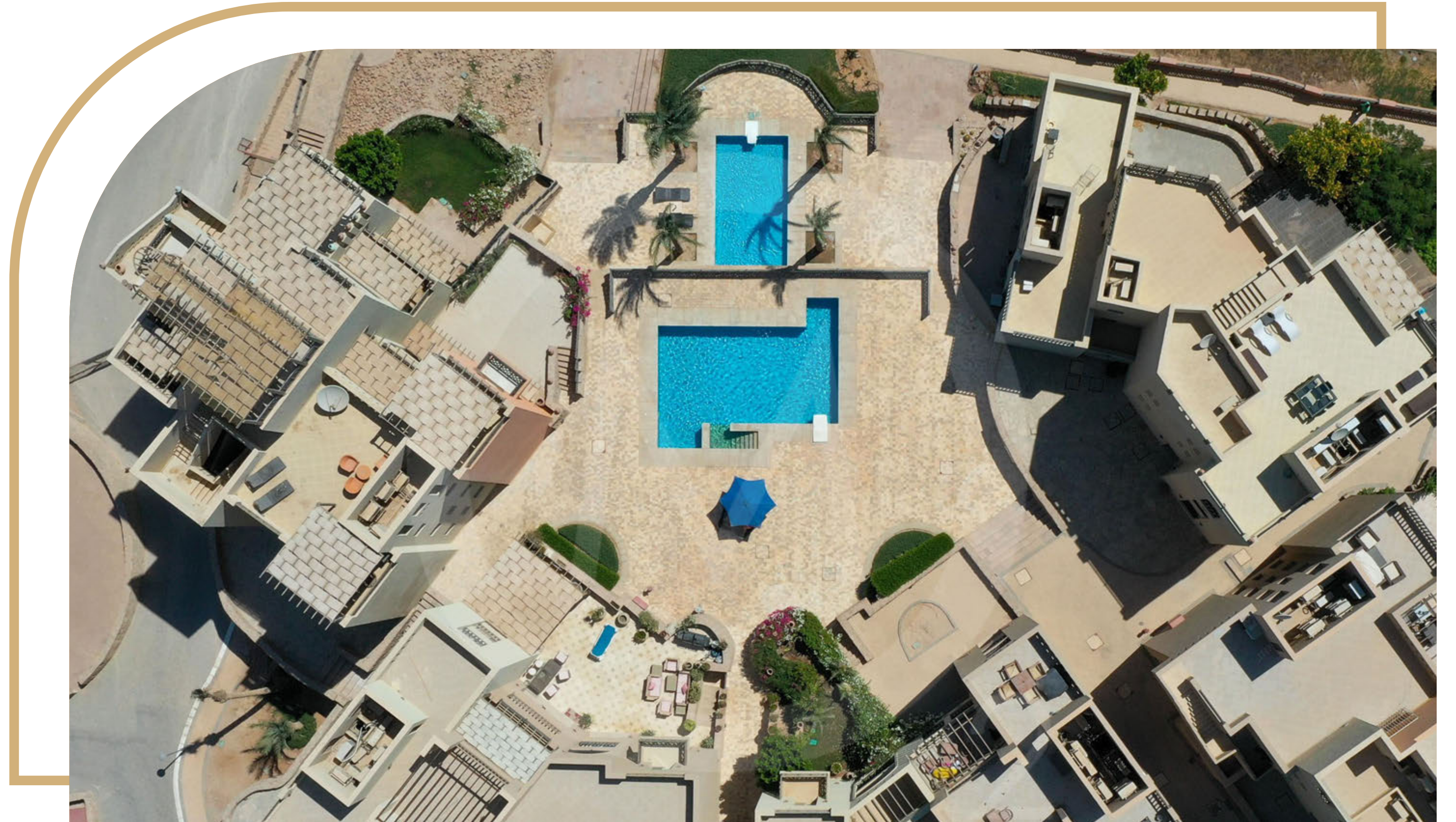
Azzurra means sky blue, the truest color of the shades of blue. Representing clarity, calmness and positivity, Azzurra Sahl Hasheesh is the perfect Community for a chic and memorable Red-Sea living with spreads of blue reaching as far as you can see, a serene place that you can call home.



THE CONCEPT

Architectural Elegance

Azzurra Sahl Hasheesh is in the heart of the 12.5 km long beach stretched across Sahl Hasheesh Bay and is crowned with elegant architecture, descending green walks, and infinity pools overlooking a magnificent panoramic view of the Red Sea.



THE CONCEPT

International Designers

Alfredo Freda

is an international designer, owning studios in Rome, London, New York and Cairo, and brings his global panache to Azzurra, creating a unique ambiance of simplicity in Azzurra's most exciting form.

Ramy El Dahan

is well known for Nubian Architectural style with its domes, vaults, and bearing walls, blending authentic lines with the modern flow of colors.

Ayman Arafa

is an award-winning architect with a portfolio that exceeds 150 projects in Egypt with a specialization in Red Sea properties and a track record that speaks for itself.



SAHL HASHEESH





A STUNNING LOCATION

Sahl Hasheesh is a secluded heaven, 15km from Hurgada international airport, located on the Red Sea coast of Egypt, initially built with the objective of creating a fully integrated mixed-use resort city that is able to achieve long-term economic and environmental sustainability.

Being Home to a number of islands and coral reefs, at Sahl Hasheesh, you will enjoy magnificent vistas of the mountains by the sea, white sand beaches, and a thriving community of marine life that leaves all explorers enchanted by its magic.

SAHL HASHEESH

IN THE HEART OF THE RED SEA

-  **13 KM** from Senzo Mall
-  **16 KM** from Makadi Bay
-  **25 KM** from Hurghada International Airport
-  **57 KM** from El Gouna





A Life Worth Living

A LIFE WORTH LIVING

Stunning Design With A Magnificent View

Uniquely designed by top-notch architects, all Azzurra Sahl Hasheesh properties oversee a magnificent sea-view



A LIFE WORTH LIVING

Great Return On Your Investment

Sahl Hasheesh is the fastest growing destination on the Red Sea, high in demand and still untapped by mainstream investors





A LIFE WORTH LIVING

Sahl Hasheesh, The Red Sea Sanctuary

Magnificently virgin territory, Sahl Hasheesh is a destination marked with unexplored nature gems and an exciting nightlife

Villas by Azzurra

NEW STAND-ALONE & TWIN VILLAS



AZZURRA SAHL HASHEESH

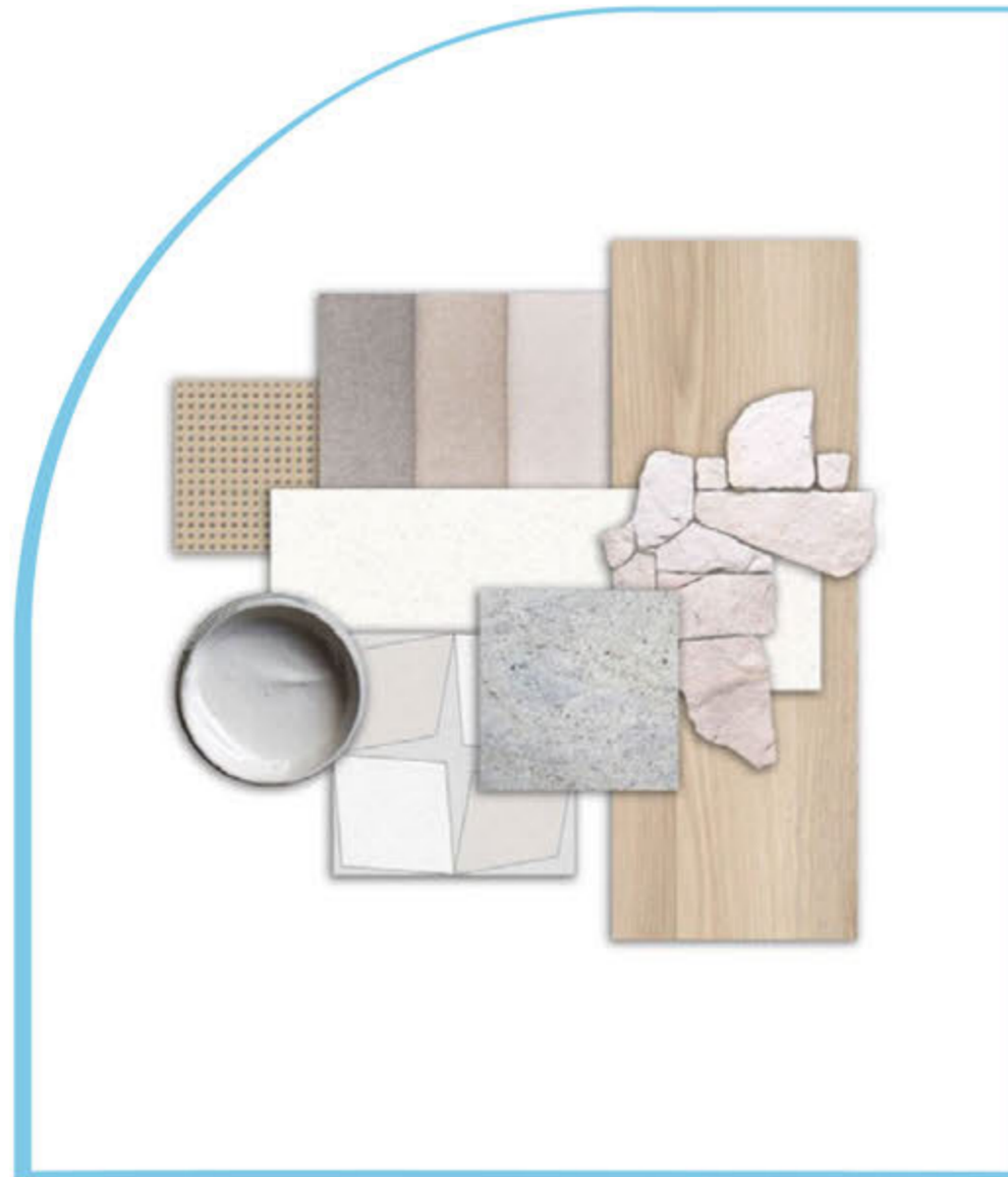
VILLAS BY AZZURRA

Building on a long-standing community alive for more than a decade, new stand-alone and twin-villas' design is inspired by the unparalleled **panoramic sea view**. The contemporary design is set to integrate the spectacular sea view in every space, whether from the comfort of your bedrooms, relaxing in the living room, having a meal in the dining room, or even from your kitchen. Villas are cascaded to ensure a flawless sea view, each villa is positioned to grant that definitive privacy every home owner seeks. The high-rise ceiling coupled with open spaces indulges an infinite blue horizon.

Villas offers a turn key solution, with an exquisite finishing, including fully fitted bathrooms, air conditions, kitchen cabinets, as well as designated parking spots. Stand-alone Villa scan be delivered with a Dip Pool and pool deck overlooking the sea view.



MOODBOARD



Light Theme

- Wood effect tiles
- Sand stone cladding
- Off-white tiles
- Custom cement tiles
- Rattan element
- Fabric stones
- Granite



Dark Theme

- Terrazzo effect tiles
- Dark stone cladding
- Light gray tiles
- Custom cement tiles
- Rattan element
- Fabric stones
- Granite
- Wood

PAYMENT PLAN

2.5%

Reservation Installment

7.5%

Contractual Installment
(within three months)

10%

Delivery Installment

5 years

Installments
(equal installments)

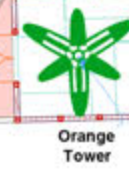
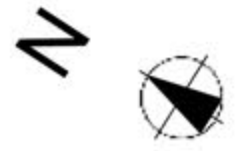
10%

Maintenance Fee
(in installment)



VILLAS BY AZZURA-MASTERPLAN

Type A



VILLA TYPE A

Elevated some 32m above sea level, Type A villa design masquerades an exceptional panoramic view of the blue horizon intersecting with the Red Sea vistas. The use of high-rise ceiling coupled with the wide façades intends to bring the view into every room, with a breath-taking view from the roof top terrace, crowned with the coziness of your private swimming pool.





VILLA TYPE A

2

Floors

2

Parking
Cars

4.5

Bedrooms

Includes ensuite multi-purpose rooms

VILLA TYPE A FLOOR PLAN

Premium
(6 bathrooms)

TUA: 246m²

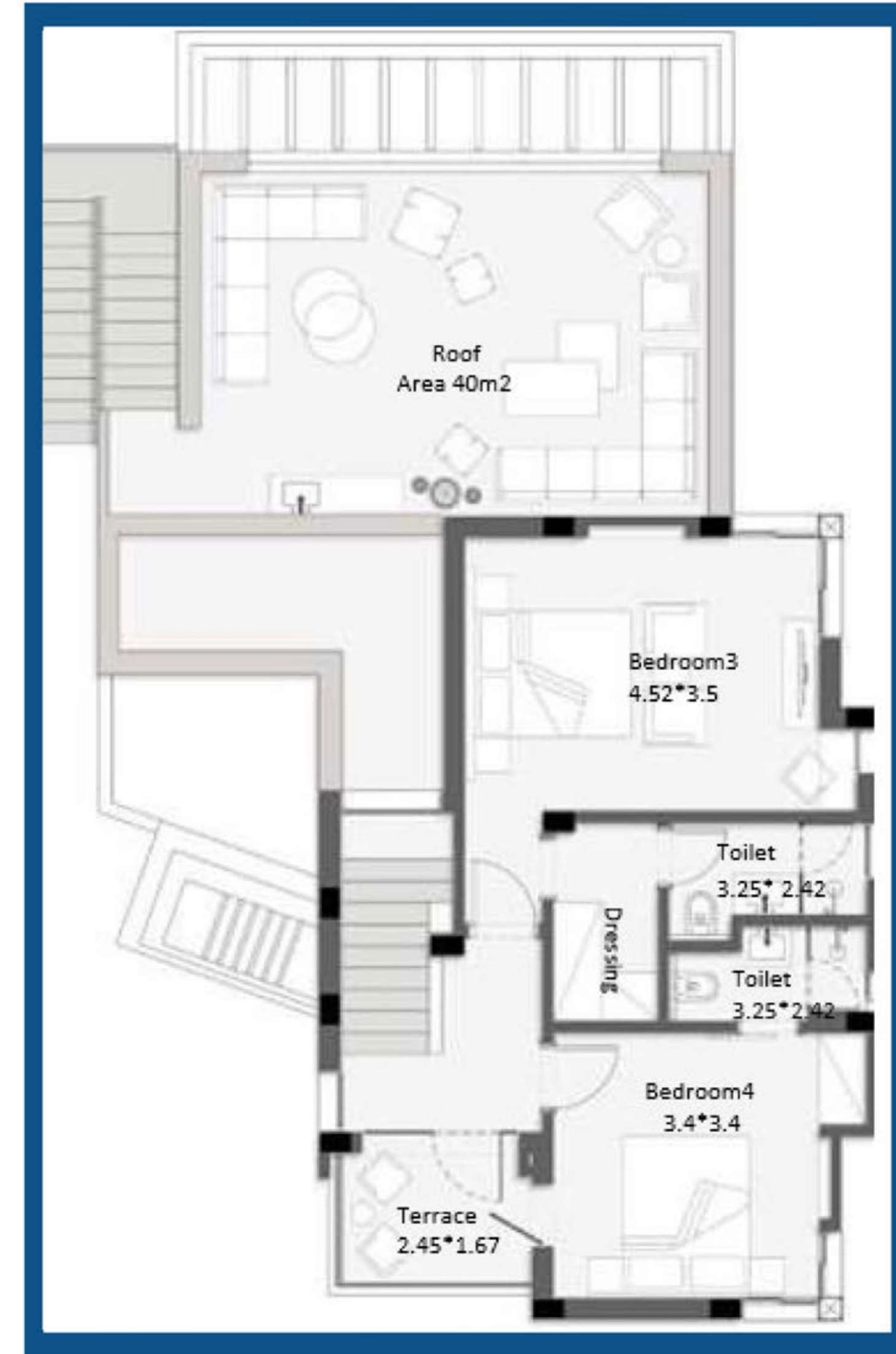
Avg. Plot Area: 420m²

Garden AV: 260m²

Roof: 44m²



Ground Floor



First Floor

VILLA TYPE A

FLOOR PLAN

(4 bathrooms)

TUA: 246m²

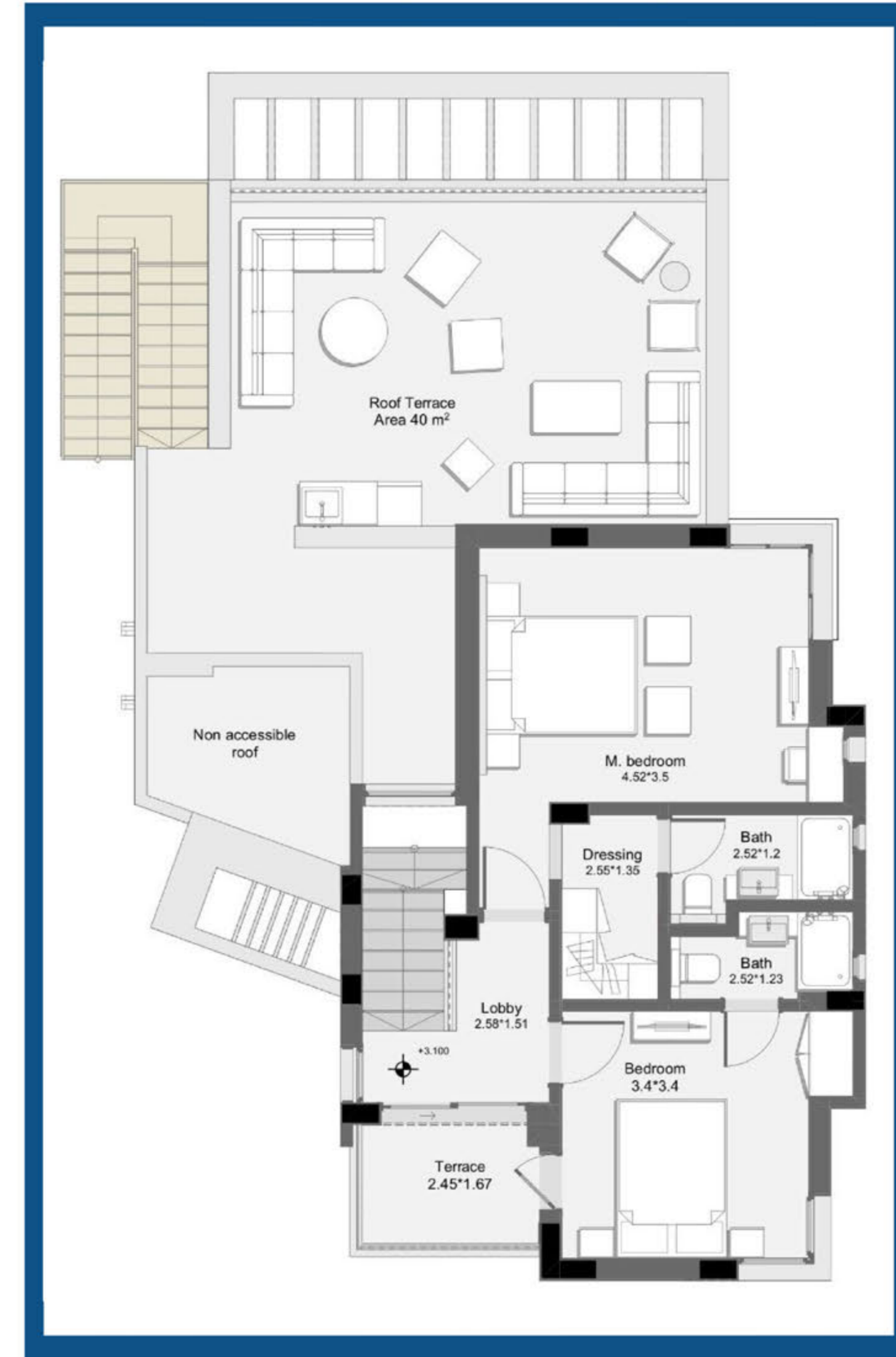
Avg. Plot Area: 420m²

Garden AV: 260m²

Roof: 44m²



Ground Floor



First Floor



Contact Us: Plot 26, Sahl Hasheesh, Bld 6B, Hurghada, Red Sea, Egypt.
Phone: (+20) 10 22 97 0001
Email: info@azzurra-redsea.com

Thank You